

U-F Under-Floor Enclosure

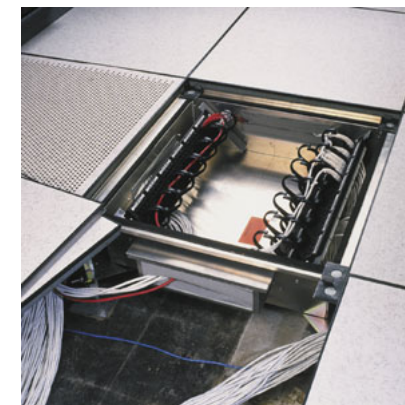
The systems can be used in data centers or near workstations for zone cabling applications, which create consolidation points for easier and cable reconfigurations. These enclosures are ideal for Network engineers where under floor access is kept to a minimum.

The U-F Enclosure provides easy access as a rack-mount enclosure when located under a False floor. Placing connections under the raised floor saves valuable rack-mounting space within equipment cabinets.

The U-F Enclosure fits into any 600x600mm false floor grid which has adequate height, these are adaptable to any type of floor tile. The U-F Enclosure is bracketed to all four pedestal legs and sits flush under the stringers. Patching access points is achieved through side funnels with edge protection and can be fitted with fire protected foam sheets.

UF Enclosure Security.

Understandably every Data Centres has and need a high security, the U_F Enclosure does not take that restriction away. The U-F Enclosure can be fitted with a lockable cover giving restricted access to the patch panels and their connections.



U-F Enclosure Applications

In some applications, cabinets require minimal Ethernet or Fibre connectivity and other cabinets may not be designed to take 19" patch panels. This then causes an issue with long patch leads being connected to another cabinet. By Installing a U-F Enclosure directly at the rear of the cabinet or under the nearest full accessible floor tile resolves these issues. Test Bed or Server build cabinets can also optimise the U-F Enclosure, this eliminates the use of above floor patching and is quick and easy to strip out after use.

